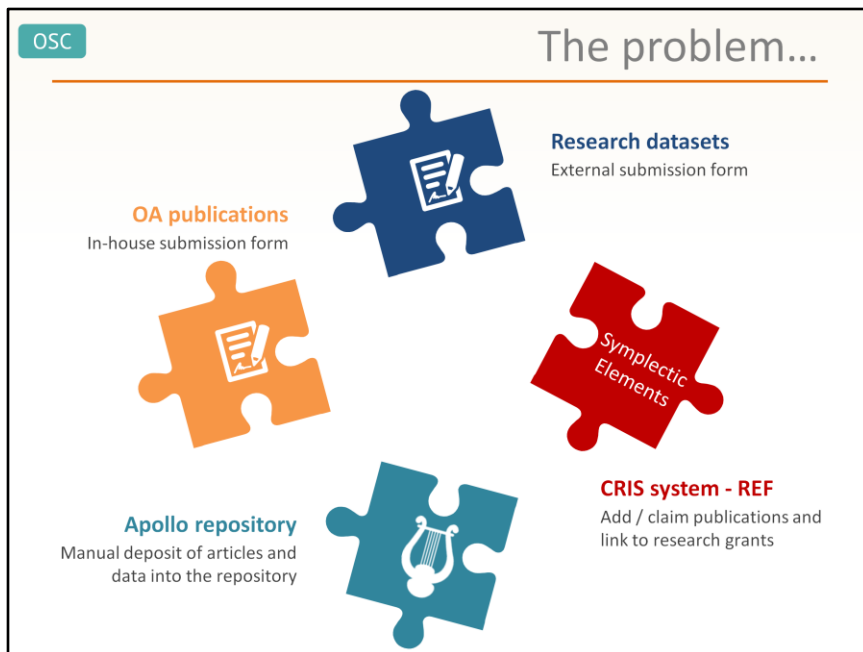
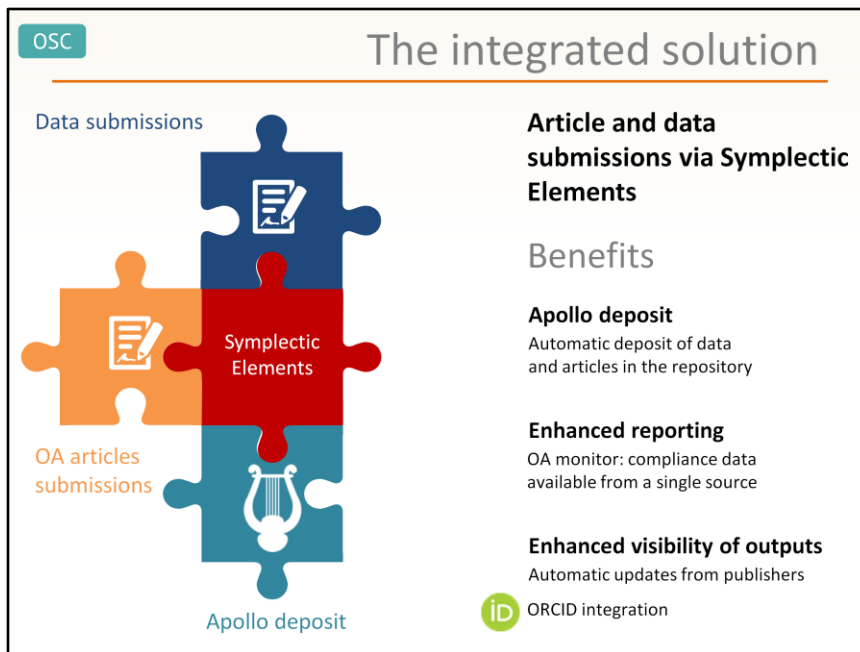


# Open Access and Research Data Symplectic Pilot

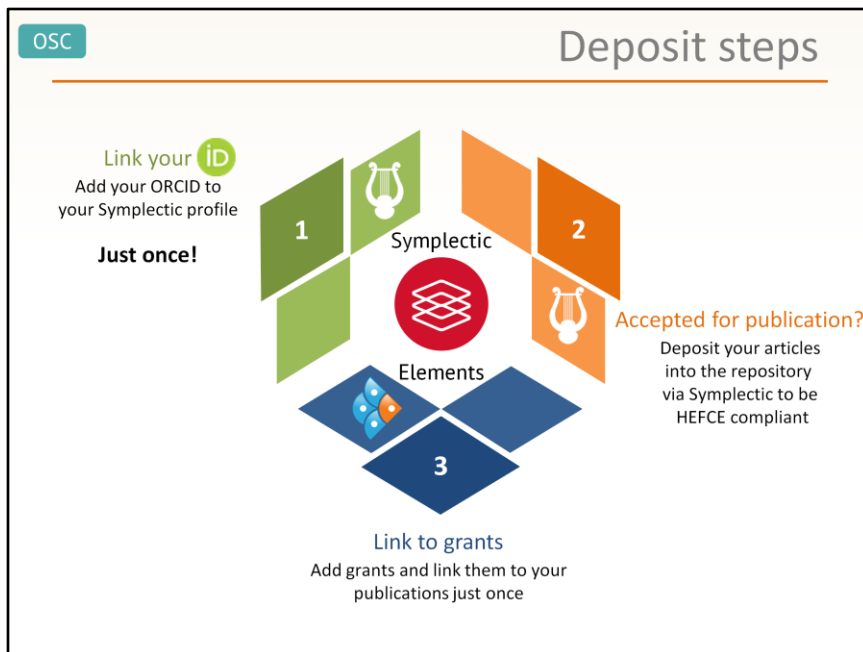
Prepared by the Office of Scholarly Communication.  
Please direct general queries to [info@osc.cam.ac.uk](mailto:info@osc.cam.ac.uk).



Currently if someone wants to deposit a paper or dataset to make it open access they have to navigate several different systems and often enter the same data into each system. This is slow and time consuming for both researchers and the staff who run the systems.



The integrated solution uses Symplectic Elements to join all of these systems and provide a one-stop shop for all our researchers' needs. It also provides more granular and accurate reporting for departments on the publication activities of researchers. This will replace the current open access upload page ([www.openaccess.cam.ac.uk](http://www.openaccess.cam.ac.uk)) and the current data upload page ([www.data.cam.ac.uk/upload](http://www.data.cam.ac.uk/upload)).



Symplectic Elements doesn't just integrate with the Open Access and Open Data service. It has several other key features to make life easier for researchers.


- 1 Link your ORCID to your Symplectic profile, you only need to do this once. Alternatively, if you don't have one, you can create and link it via Symplectic.
  - No need to claim in Symplectic those publications in your ORCID profile. Symplectic will automatically add and claim them for you
  - Your ORCID will be displayed in the repository for any outputs you deposit via Symplectic
  - All your publications in the repository will be added automatically to your ORCID profile
- 2 Your publications will be available in the repository faster
- 3 Less administrative burden when reporting to funders: if you link your publications to grants in Symplectic they will be automatically imported into Researchfish, so you will only need to approve them

CAMBRIDGE  
 Apollo Home / School of the Biological Sciences / Department of Veterinary Medicine / Scholarly Works - Veterinary Medicine / View Item

Apollo  
 Search Apollo

Browse  
 All of Apollo  
 > Communities & Collections  
 > Authors  
 > Titles  
 > Subjects  
 > Type  
 This Collection  
 > Authors  
 > Titles  
 > Subjects  
 > Type

**T and B cell Responses to Multivalent Prime-Boost DNA and Viral Vectors Vaccine Combinations against Hepatitis C Virus in Non-Human Primates**



**View / Open Files**  
 Accepted version (PDF, 995Kb)

**Authors**  
 Rollier, Christine S.  
 Verschoor, Ernes J.  
 Verstrepen, Babs E.

**Citation**  
 Rollier, C. S., Verschoor, E. J., Verstrepen, B. E., Drexhage, J. A. R., Paranhos-Baccala, G., Liljeström, P., Sutter, C., et al. (2016). T and B cell Responses to Multivalent Prime-Boost DNA and Viral Vectors Vaccine Combinations against Hepatitis C Virus in Non-Human Primates. *Gene Therapy* <http://dx.doi.org/10.1038/gt.2016.55>

**Description**  
 This is the author accepted manuscript. The final version is available from Nature Publishing Group at <http://dx.doi.org/10.1038/gt.2016.55>.

**Abstract**  
 Immune responses against multiple epitopes are required for the prevention of Hepatitis C Virus infection, and the progression to Phase I trials of candidates may be guided by comparative immunogenicity studies in non-human primates. Four vectors, DNA, SFV, human serotype 5 adenovirus (huAd5) and Modified Vaccinia Ankara recombinant (MVA), all expressing HCV Core, E1, E2 and NS2, were

Blog about Request a Copy - <https://unlockingresearch.blog.lib.cam.ac.uk/?p=889>

Researchers can put any of their research outputs on to the repository via Symplectic Elements. If we are unable to make the outputs openly available (due to copyright restrictions, for example) we will still archive the item. Interested readers will be able to request a copy of the document and these requests are sent to the authors for approval. This enables a greater discoverability and disseminate of outputs.

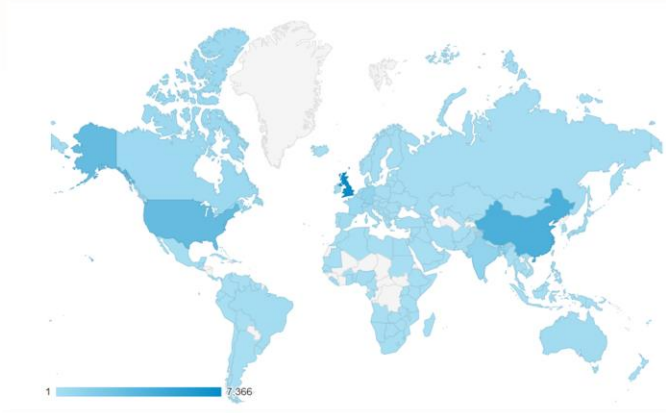
We are receiving about 300 requests a month – 45% of the article requests are for papers not yet published.

The screenshot displays the Apollo digital library interface. At the top left is the Apollo logo, and at the top right is a search bar labeled 'Search Apollo'. Below the header is a dark teal banner with the text 'Request a copy of the document'. On the left side, there is a navigation menu with the following sections: 'All of Apollo' (containing 'Communities & Collections', 'Authors', 'Titles', 'Subjects', and 'Type'), and 'This Collection' (containing 'Authors', 'Titles', 'Subjects', and 'Type'). The main content area on the right contains the following text and form elements:

- Administrators of this collection can login to view this document.
- [Login](#)
- Enter the following information to request a copy of the document from the responsible person. Please note that if requesting a thesis, there may be a charge for this service.
- T and B cell Responses to Multivalent Prime-Boost DNA and Viral Vectors Vaccine Combinations against Hepatitis C Virus in Non-Human Primates
- Your name:**
- Your email address:**
- This email address is used for sending the document.
- Files:**
- All files (of this document) in restricted access.
- Only the requested file.
- Message:**
- 

The Request a Copy feature is proving to be popular!

Repository use 1st January 2017 – 1st February 2017




The repository is used by people from all over the world. In January 2017 it had 25,655 users.

OSC
Well used

---

In January 2017, there were

65,000 page views  
in the repository



[View / Open Files](#)  
Published version (PDF, 433Kb)

Browsing Faculty of Education by Title

A B C D E F G H I J K L M N O P Q R S T U V W X Y Z

Or enter first few letters:

Now showing items 1-10 of 114

**Advised aesthetic knowing: A dialogic account**

Gibson, J.G. 2016, p. 1-10

Using the different voices of the master and mentee, we engage with the notion of creating and conferring aesthetic significance as it occurs in the extended time of creative practice. We investigate how the arts empower ...

**Analyzing Symbolic Expressions in Secondary School Chemistry: Their Functions and Implications for Pedagogy**

Gibson, J.G., Taylor, S. & Taylor, S. 2016, p. 1-10

Symbolic expressions are essential resources for producing knowledge, yet they are a source of learning difficulties in chemistry education. This study aims to employ social semiotics to analyse the symbolic representation ...

**Appreciative evaluation of restorative approaches in schools**

Barnes, T. 2016, p. 1-10

A restorative approach to conflict is being increasingly applied in schools around the world. Existing evaluation evidence has tended to focus on the impact on quantifiable outcomes such as number of behaviour incidents ...

**Art education: a case of mistaken identity?**

Barnes, T. 2016, p. 1-10

This paper begins by identifying two fundamental problems in contemporary British and American secondary art curricula: epistemological confusion and the absence of any aesthetic component. This paper proposes a ...

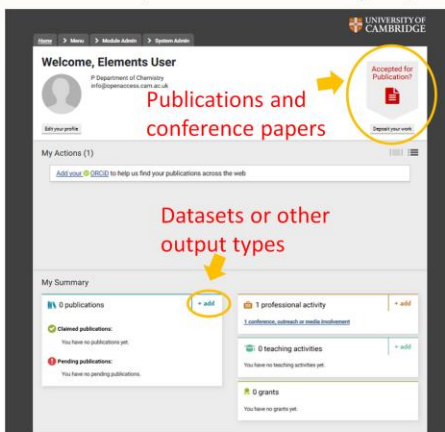
and 80,000 file downloads

Many of the downloads happen straight from Google search results pages, which means people can download files from the repository without actually visiting it.



## How do I deposit

Log into Symplectic Elements with your Raven account and go to your home screen.



Select this button to upload journal article and conference proceedings.

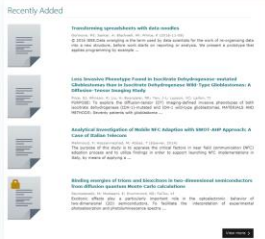
Other output types, e.g. datasets, working papers, chapters, can be added using the '+ add' button.

Full instructions can be found on Moodle:

<https://www.vle.cam.ac.uk/mod/book/view.php?id=5302501&chapterid=220191>

Video instructions are also available via Moodle. You can start depositing your outputs via Symplectic now.

# What happens next?



Once you've deposited the Open Access and Open Data teams will check your deposit and make it live in the repository.

They will check if you need to comply with any policies and advise you how to do this just as they do now with the current system.



## Who do I contact if I need help?

---

For help with **Open Access submissions** (journal articles and conference proceedings):

[info@openaccess.cam.ac.uk](mailto:info@openaccess.cam.ac.uk)

For help with **data submissions**:

[info@data.cam.ac.uk](mailto:info@data.cam.ac.uk)

For help with **submissions of other outputs** (working papers, chapters, images etc):

[support@repository.cam.ac.uk](mailto:support@repository.cam.ac.uk)

For **user support** for Symplectic Elements:

[researchinformation@admin.cam.ac.uk](mailto:researchinformation@admin.cam.ac.uk)